



The Chartered
Institute of Logistics
and Transport

Working in and around vehicles

WORKSAFE

Mahi Haumaru Aotearoa

Ruth Cook


ShopCare
Connecting for healthier workplaces



ShopCare:

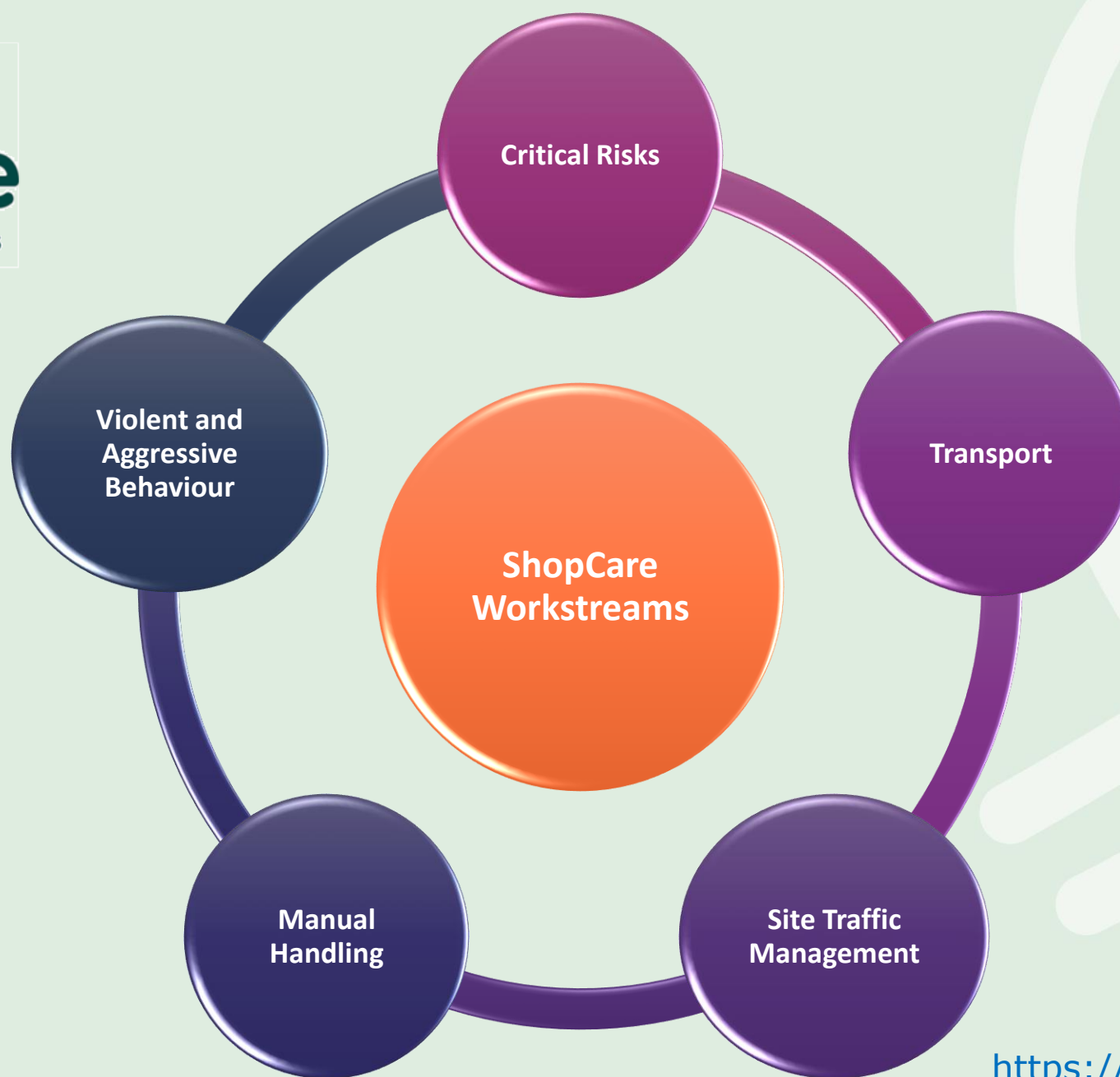
Health & safety industry association for retail, supply chain, manufacturing and transport

- **Purpose**

ShopCare aims to accelerate the reduction of work-related death, injury and ill health in Retail and Supply Chain.

- **Vision**

Connecting for healthier workplaces





The Chartered
Institute of Logistics
and Transport

Working in and around vehicles

WORKSAFE

Mahi Haumaru Aotearoa

Ruth Cook


ShopCare
Connecting for healthier workplaces



At least

73%

acute workplace fatalities
involved a vehicle

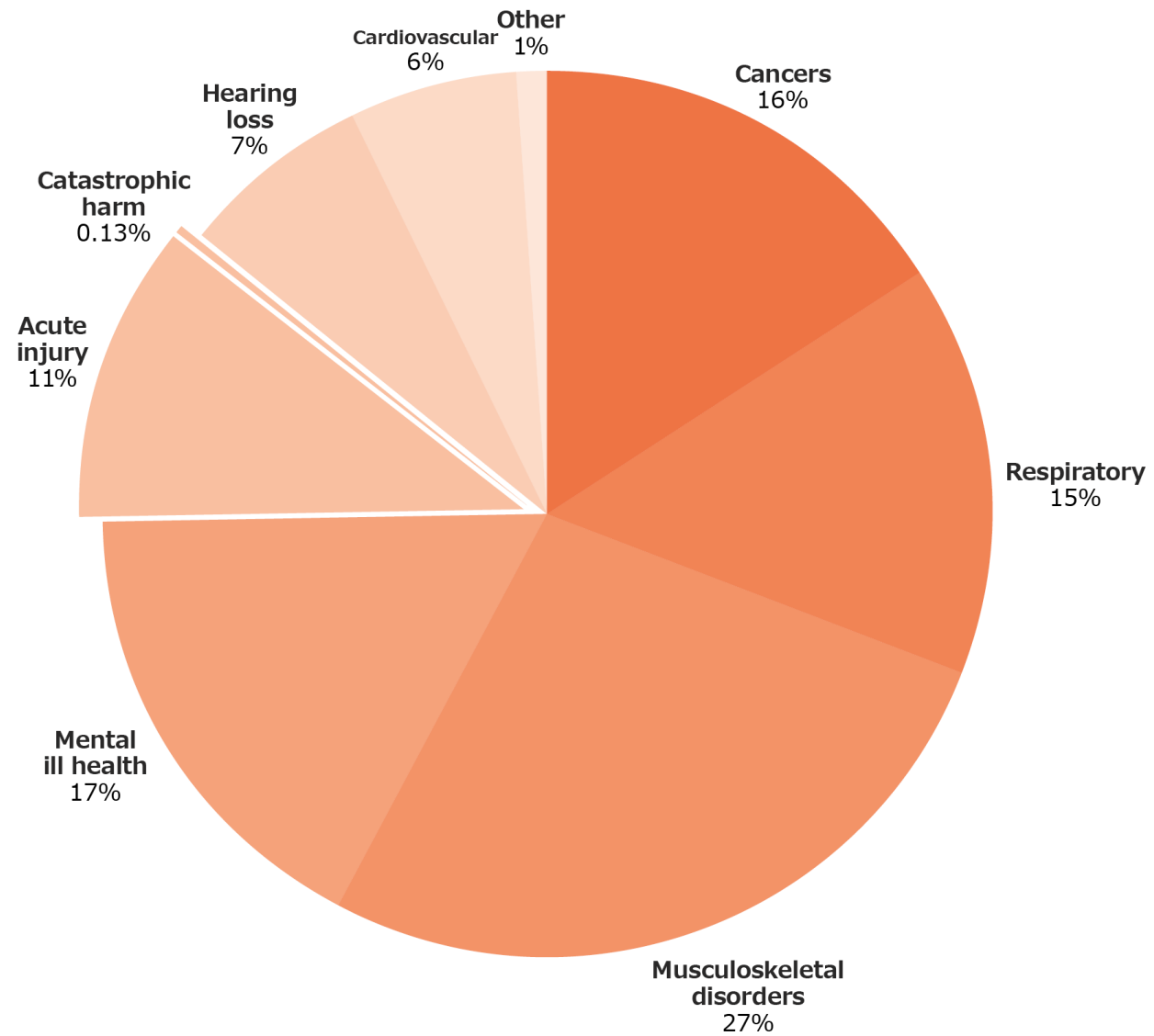


At least

23%

annual road toll is someone
driving for work

Full burden of harm



Key harm mechanisms

- Site traffic management
- load management
- Falls
- Non-use of seatbelts
- Upstream pressures
- Diesel exhaust fumes



Courageous action required

Who needs to lead?



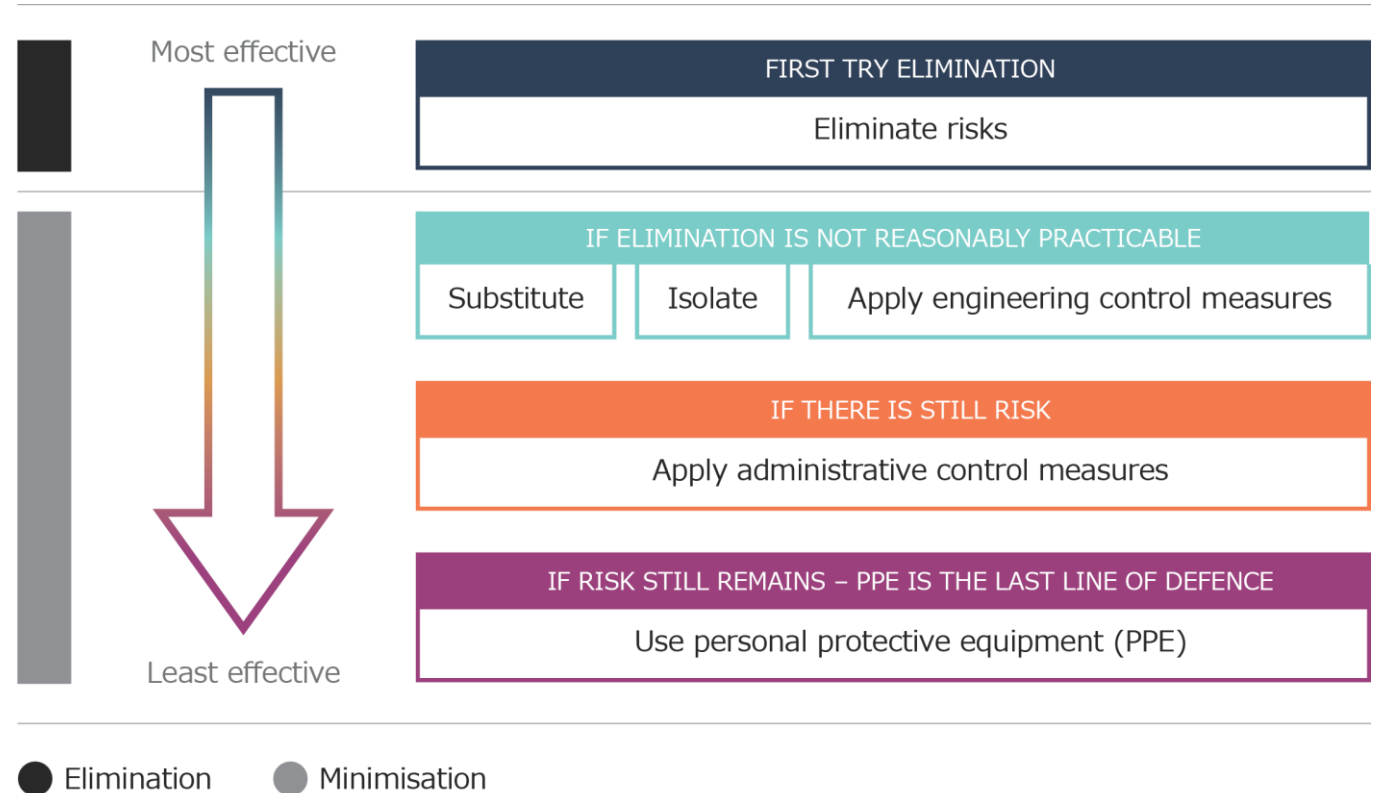


What is the scope?

How do you
prioritise?



Hierarchy of controls



What WorkSafe is doing

- Focus on safe use of structure, plant and vehicle
- Focus on upstream procurement



Some questions to leave you with:

- If we are to see a reduction in vehicle-related harm, what courageous action can you take?
- How can WorkSafe support you in doing this?

Ruth Cook
Ruth.cook@worksafe.govt.nz
021 834 576

Getting you home healthy and safe.
That's what we're working for.

WORKSAFE
Mahi Haumaru Aotearoa

Contact us:

Liz May (CEO)
027 444 0721, liz@shopcare.org.nz

Wes van Deventer (Business Manager)
027 5454 837, wes@shopcare.org.nz

Catherine Ross (Transport Business Development Manager)
021 193 3787, catherine@shopcare.org.nz

<https://www.shopcare.org.nz/>
<https://www.linkedin.com/company/shopcare/>



National Office:

Administration Manager: Chris Gunn CMILT

Ph: 09 368 4970

Mobile: 021 888 399

info@cilt.co.nz

Northern Section Chair:

Rob Mayo

Mobile: 022 041 8498



**The Chartered
Institute of Logistics
and Transport**