



Southern Section Chartered Institute of Logistics and Transport In New Zealand Incorporated

Newsletter, 11 March 2012



From the Chair

It is particularly interesting times here in Christchurch as the rebuild starts to gather pace. One of the key pieces of infrastructure from a transport and logistics perspective is the Port, and I would like to thank Nick Flack and the Lyttelton Port of Christchurch for hosting us on the 26th of February. I was surprised at the amount of change since my last visit four years ago. It is encouraging to see how the Port continues to grow and respond to new challenges.

Our next site visit will be to Hilton Haulage next week and more details are set out below.

We also hope to confirm the date for another visit coming up in April. This will be to Ravensdown which is a co-operative 100% owned by farmers. It is more than a just a supplier of farm fertiliser.

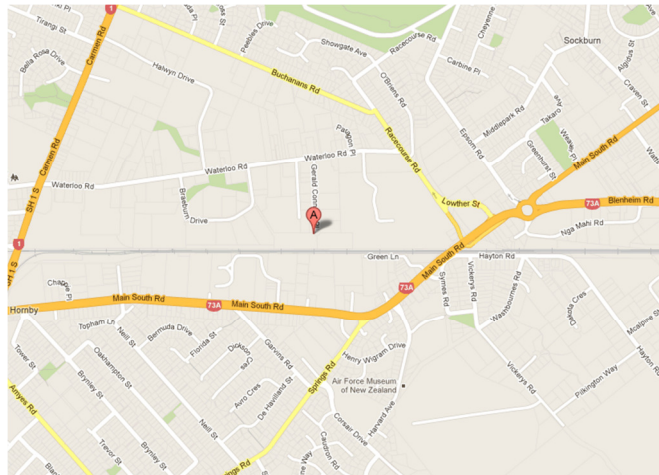
Finally, I would like to introduce the final two members of our hard working Committee Harriet Mason and Stephen Bateman. We are very pleased to have them as part of the team.

Visit to Major Trucking Company Hilton Haulage

Date: [19 March 5.30pm-7.30pm](#)

Venue: Hilton Sockburn Office
22 Gerald Connolly Place
Sockburn
CHRISTCHURCH

RSVP's: Christine.Holt@tdg.co.nz
by 15 March 2013



Background

The company was formed in October 1994 from a management buy out of the former company known as Hilton Haulage Ltd. Under its former name, the organisation had traded for over 25 years.

Hilton Haulage Transport is privately owned, some of whom work full time for the organisation in management and operations. From our base in Timaru we hold the largest market-share by a considerable margin for freight, containers and storage in the South Canterbury area. The company specialises in providing transport and storage solutions for large national and international organisations.



Southern Section Chartered Institute of Logistics and Transport In New Zealand Incorporated

People

Hilton Haulage Transport Ltd has over 140 employees, reaching a level of 175 employees during the harvest season. Our core staff are loyal employees, many of whom have worked for the company for over 15 years.

Fleet

The company has in excess of 70 trucks and 90 trailers. All vehicles are modern and well maintained, the majority of trucks and tractor units being less than 4 years old. Hilton Haulage Transport Ltd prides itself on the high levels of appearance, maintenance and safety of the fleet, as well as our policy of routine upgrades and replacements. Our clean modern fleet and specialised transport units are maintained in a clean and sanitised condition.

A full range of modern trucks, tractor units, crane trucks, flatdecks, curtainsiders, tipping trucks/trailers, skeletal trailers, forklift transporter and specialised agricultural equipment is used to service the needs of our wide-ranging customer base. We can meet virtually every transport requirement of existing or potential customers.

Upcoming International Convention

Dear International CILT Family

The CILT Convention website is now live with details of how to book onto the 2013 International Convention in Sri Lanka :

<http://ciltconvention2013.ciltsl.com/>

We would love to have as many international delegates as possible this year join us in Sri Lanka so please send this web link to all your members and encourage as many as possible to come.

Why they should join?

- *We have a great programme planned – international speakers, a focus on Women in Logistics, interactive Young Professionals sessions*
- *An opportunity for delegates to hear and shape our future as an organisation through inputs to our marketing, education, membership, WILAT and YP's agendas*
- *Variable and affordable packages and an easy to book website*
- *It's In Sri Lanka in June so see how you can add other activities on and make it a journey of refreshment as well as a place to meet other members and friends*

Please book early, some have already booked so don't miss out.

Keith Newton

International Secretary General

Chartered Institute of Logistics and Transport



Southern Section Chartered Institute of Logistics and Transport In New Zealand Incorporated

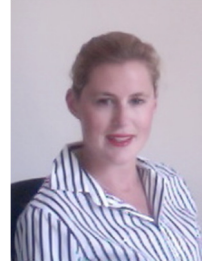
Introducing the CILT Southern Section Committee Members (Continued)

Below is a brief introduction (and photo) of some of the Southern Section committee members. We all look forward to meeting more of our CILT members in 2013.

Harriet Mason

I am a Lincoln University student currently in the 3rd year of a bachelors degree in commerce. I am majoring in the Food Industry and Supply Chain Management. I hope to combine these two majors in my possible career path.

My hobbies include tramping and anything involving the outdoors.



Stephen Bateman

Stephen is a Director and owner of S B Global Logistics (Partner of the DB Schenker Network) and JSP Logistics Ltd (A specialised freight forwarder involved in handling Japanese imports and exports with offices in Christchurch, Brisbane and Tokyo).

Stephen joined the Freight Forwarding Industry in 1980 working for a local Customs Broker in Christchurch before venturing to Australia where he worked for Kuehne + Nagel for 2 years in a Freight Forwarding Operations Management role. Returning to New Zealand he took on a National Airfreight role for Burnip Elliott Airfreight establishing their Auckland and Christchurch offices.

Today Stephen's role with his companies is to provide strategic direction, identify growth opportunities and make the "business better".

Stephen joins the CILT committee with over 30 years' experience in International Freight Forwarding, and 3rd Party Logistics Services. He looks forward to contributing to the committee and sharing his knowledge and experience with his particular interest in 3PL.



New CILT Leaders For The Future Programme

CILT NZ and CILT UK are working together with Jo Brosnahan and Richard Hunt (London), operating as "Leaders for the Future", to provide a leadership programme designed specifically for leaders in the logistics and transport industry. Both are former Chairs of CILT in their respective countries.

The 'Leaders for the Future' programmes enable leaders to grow personally, to understand the changing sector and world in which they will lead and to develop the networks and capability to deal with that world.

The first NZ 'Leaders for the Future' programme is a 10 day personally designed leadership programme that targets the leaders within the sector who will lead the logistics and transport industry into the future. It is proposed that it will begin in June/ July this year and will be run over 4 sessions to be held around the country, with various opportunities for the group to interact with CILT members.

The programme focuses on leading in a globally connected world and provides the following opportunities for attendees:

- An in depth understanding of the issues confronting the industry, including global and national economic influences, sustainability, social and cultural challenges, technology, leadership in the workplace etc.
- Learning from other leaders, facilitated through in depth conversations and seminars with senior leaders within the logistics and transport sector.
- The development of leadership skills and practices, and in particular, the understanding of



Southern Section Chartered Institute of Logistics and Transport In New Zealand Incorporated

self – the basis of leadership.

- The development of in depth relationships with a network of other participants from across the country.
- Participants will get to view the world through a broad range of lenses – of different sectors, industries, modes, and different locations.

The details of the programme and the application process will be posted on the CILT website shortly. Jo is interested in your views on the key issues confronting the industry, potential speakers for the programme, possible venues and potential participants.

If you would like to register an interest in receiving further information on the Programme, or to provide input, Jo can be contacted at:

jo.brosnahan@gmail.com

Phone 09 4788363

Cell 021 576595.
